

# H TIMING PULLEYS

0.500" Trapezoidal Pitch

For 2" Wide Belts

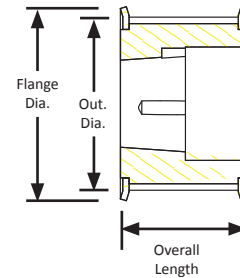
Steel/Iron

Split Taper Bore

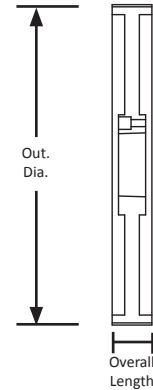


Part Number	No. of Teeth	Type	Pitch Dia. (in)	Out. Dia. (in)	Flange Dia. (in)	Bushing	Face Width (in)	Overall Length (in)
22HP200	22	3F	3.501	3.447	3.813	P2	2.281	3.188
24HP200	24	3F	3.820	3.766	4.063	P2	2.281	3.188
26HP200	26	3F	4.138	4.084	4.375	P2	2.281	3.188
28HP200	28	3F	4.456	4.402	4.688	P2	2.281	3.188
30HP200	30	3F	4.775	4.721	5.000	P2	2.281	3.188
32HQ200	32	E1F	5.093	5.039	5.313	Q1	2.500	2.781
36HQ200	36	E1F	5.730	5.678	6.000	Q1	2.500	2.781
40HQ200	40	E1F	6.386	6.312	6.563	Q1	2.500	2.781
44HQ200	44	E1F	7.003	6.949	7.250	Q1	2.500	2.781
48HQ200	48	E1F	7.639	7.585	7.875	Q1	2.500	2.781
60HQ200	60	A3	9.549	9.495	-	Q1	2.500	3.063
72HQ200	72	A3	11.459	11.405	-	Q1	2.500	3.063
84HQ200	84	A3	13.369	13.315	-	Q1	2.500	3.063
96HR200	96	A3	15.279	15.225	-	R1	2.875	3.297
120HR200	120	A3	19.098	19.045	-	R1	2.875	3.297
156HR200	156	A3	24.828	24.774	-	R1	2.875	3.406

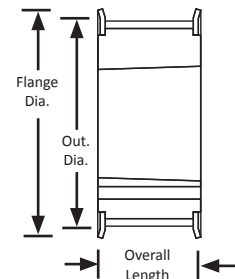
TYPE 3F



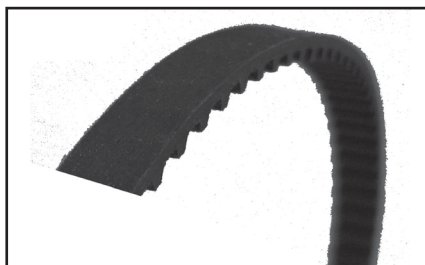
TYPE A3



TYPE E1F



For matching Split Taper bushings, see page 374.



For matching H pitch belts, see page 199.